

RESEARCH

Open Access

A β 43 in human Alzheimer's disease: effects of active A β 42 immunization



Lieke Jäkel^{1,2}, Delphine Boche³, James A. R. Nicoll^{3,4} and Marcel M. Verbeek^{1,2*}

Abstract

Neuropathological follow-up of patients with Alzheimer's disease (AD) who participated in the first clinical trial of Amyloid- β 42 (A β 42) immunization (AN1792, Elan Pharmaceuticals) has shown that immunization can induce removal of A β 42 and A β 40 from plaques, whereas analysis of the cerebral vessels has shown increased levels of these A β peptides in cerebral amyloid angiopathy (CAA). A β 43 has been less frequently studied in AD, but its aggregation propensity and neurotoxic properties suggest it may have an important pathogenic role. In the current study we show by using immunohistochemistry that in unimmunized AD patients A β 43 is a frequent constituent of plaques (6.0% immunostained area), similar to A β 42 (3.9% immunostained area). A β 43 immunostained area was significantly higher than that of A β 40 (2.3%, $p = 0.006$). In addition, we show that A β 43 is only a minor component of CAA in both parenchymal vessels (1.5 A β 43-positive vessels per cm² cortex vs. 5.3 A β 42-positive vessels, $p = 0.03$, and 6.2 A β 40-positive vessels, $p = 0.045$) and leptomeningeal vessels (5.6% A β 43-positive vessels vs. 17.3% A β 42-positive vessels, $p = 0.007$, and 27.4% A β 40-positive vessels, $p = 0.003$). Furthermore, we have shown that A β 43 is cleared from plaques after A β immunotherapy, similar to A β 42 and A β 40. Cerebrovascular A β 43 levels did not change after immunotherapy.

Keywords: Amyloid- β , A β 43, Cerebral amyloid angiopathy, Alzheimer's disease, A β immunotherapy, Human study, Immunohistochemistry

Introduction

Alzheimer's disease (AD) is characterized by the extracellular accumulation of the Amyloid- β (A β) protein in the brain parenchyma as plaques and in cerebrovascular blood vessel walls as cerebral amyloid angiopathy (CAA), and the intraneuronal accumulation of the tau protein. It is hypothesized that CAA is caused by dysfunctional A β elimination: a process that may include enzymatic degradation, receptor-mediated clearance across the blood-brain barrier (BBB), and drainage with interstitial fluid along perivascular pathways [33]. Blockage of these pathways may lead to aggregation of A β in the vessel walls as CAA [10, 22]. In a subset of CAA patients, A β deposits in both arteries and arterioles, and capillaries (CAA type 1), whereas more commonly,

cerebrovascular A β accumulation is restricted to larger vessels, without affecting capillaries (CAA type 2) [34]. The occipital lobe is most frequently and severely affected by CAA [1, 2], and leptomeningeal vessels are more frequently affected compared to parenchymal vessels [1, 27].

A β is a peptide consisting of 38 to 43 amino acids, with A β 40 and A β 42 being the most-studied A β isoforms. A β 42 is a major constituent of plaques, whereas some studies show that A β 40 is the predominant species in CAA [9, 28]. A β is produced through cleavage of the amyloid precursor protein (APP) by γ -secretase, which is predominantly initiated at ϵ cleavage sites situated after Leu49 or Thr48. The resulting A β 49 or A β 48 are sequentially cleaved in increments of three amino acids, which leads to the production pathways A β 49 \rightarrow A β 46 \rightarrow A β 43 \rightarrow A β 40 and A β 48 \rightarrow A β 45 \rightarrow A β 42 [7, 26, 32]. Only relatively recently it was found that in addition to A β 40 and A β 42, also A β 43 may play a major role in AD, as plaques contain more A β 43 than A β 40 [13, 29, 36]. Interestingly, although A β 43 seems to be a major

* Correspondence: marcel.verbeek@radboudumc.nl

¹Department of Neurology, Donders Institute for Brain, Cognition and Behaviour, Radboud Alzheimer Center, Radboud University Medical Center, Nijmegen, The Netherlands

²Department of Laboratory Medicine, Radboud University Medical Center, Nijmegen, The Netherlands

Full list of author information is available at the end of the article



component of plaques, no significant levels of Aβ43 have been reported in CAA [13, 36].

The amyloid cascade hypothesis states that aggregation of Aβ into plaques is the initial event in AD, followed by the formation of neurofibrillary tangles, and synaptic and neuronal loss leading to cognitive decline [17]. Therefore, in the past two decades, much attention has been directed towards the possibilities of Aβ immunotherapy to remove Aβ from the brain. Both active and passive Aβ immunotherapy approaches have been shown to be effective in the removal of plaques from the human brain, although so far the effects on slowing or preventing cognitive decline have been mainly disappointing [12, 31, 35].

In the first clinical trial of Aβ immunization, which started in 2000, patients with mild to moderate AD were actively immunized with synthetic full-length Aβ42 (AN1792, Elan Pharmaceuticals [4]). *Post-mortem* neuropathological examination of 12 immunized AD patients showed variable, sometimes extensive, clearance of Aβ plaques from the cerebral cortex [5, 20, 23, 30]. Interestingly, decreases in parenchymal amyloid were associated with an increased vascular amyloid burden [21, 23, 24]. This led to the hypothesis that immunization results in solubilization of Aβ plaques, followed by perivascular drainage of the solubilized Aβ that leads to the development of CAA [5].

In this study, we have investigated the expression of Aβ43 in parenchymal plaques and CAA in the AD brain. Furthermore, we assessed the effects of Aβ42 immunotherapy on Aβ43 accumulation, both in plaques and the cerebral blood vessels, by *post-mortem* examination of a unique cohort of patients who were included in the first AN1792 clinical trial. Aβ43 deposition was analysed in relation to Aβ40 and Aβ42, to generate more insight into the relative deposition of Aβ43 in plaques and CAA

and to study the effects of immunotherapy on the distribution of Aβ43 in AD brains. Analysing the fate of different Aβ isoforms following immunotherapy may provide insight into potential differences in clearance efficiency.

Materials and methods

Sample cohort

Sixteen Alzheimer’s disease patients immunized against Aβ42 (AN1792, Elan Pharmaceuticals Inc. [4]), denoted iAD, with confirmed *post-mortem* neuropathological AD diagnosis were examined for the current study. Twenty-one non-immunized AD cases (AD) from the South West Dementia Brain Bank (SWDBB Bristol, UK) were included for comparison. The AD and iAD groups were matched as far as possible for age, gender, and *APOE* genotype, but disease duration differed between the groups (Table 1). The study of the iAD cohort was performed under the ethical approval from Southampton and South West Hampshire Local Research Ethics Committees (Reference No: LRC 075/03/w). The use of the SWDBB tissue was covered by the ethical approval from North Somerset and South Bristol Hampshire Local Research Ethics Committees (Reference No: REC 08/H0106/28 + 5).

Immunohistochemistry

Four micrometer-thick paraffin sections of the middle temporal gyrus were used for immunohistochemistry. After rehydration and antigen retrieval, including neat formic acid pre-treatment and heat-induced epitope retrieval, sections from AD and iAD cases were stained with rabbit-anti-human Aβ43 (IBL, Fujioka, Japan; cat. no. 18583, 0.5 µg/ml). Furthermore, sections were stained with mouse-anti-human Aβ42 (clone 21F21, 1:4000) and mouse-anti-human Aβ40 (clone 2G3, 1:4000),

Table 1 Characteristics of the groups

	AD	iAD	<i>p</i>
N	21	16	
Sex (% male)	48	56	0.60 ^a
Duration Dementia (years, mean ± sd)	8.5 ± 3.3	11.9 ± 4.5	0.02 ^b
<i>APOE</i> genotype	n/a: n = 4 2,2 or 2,3: 15% 3,3: 15% 3,4: 55% 4,4: 15%	2,2 or 2,3: 0% 3,3: 25% 3,4: 50% 4,4: 25%	0.45 ^a
Age at death (years, mean ± sd)	78.0 ± 7.5	79.2 ± 8.4	0.64 ^b
Survival time after immunization (months, mean ± sd)	N.A.	91.9 ± 57.7	

Abbreviations: AD Alzheimer’s disease patients, iAD immunized Alzheimer’s disease patients, Aβ amyloid-β, N.A not applicable. n/a: not available. Analysed by ^aPearsons’ chi-square and ^bt-test.

both provided by Elan Pharmaceuticals (South San Francisco, CA, USA) [16]. Binding of biotinylated secondary antibody (goat-anti-rabbit or rabbit-anti-mouse, DAKO, Glostrup, Denmark) was detected with the Vectastain ELITE ABC kit (Vector Laboratories, Peterborough, UK), using 3,3'-diaminobenzidine (DAB) as chromogen and 0.05% hydrogen peroxide as substrate. Sections were mounted in DePex (BDH Laboratory Supplies, Poole, UK).

Antibody specificity

We tested the specificity of the antibodies by immunoassays. First, 25 nM of synthetic A β 43 (Anaspec, Fremont, CA, USA; cat. no. AS-25357), A β 42 (Bachem, Bubendorf, Switzerland; cat. no. H-1368), and A β 40 (QCB, Hopkinton, MA, USA; cat. no. 20-1000), all diluted in NaHCO₃ (pH 9.6), were coated overnight at 4 °C on a 96-wells plate. Then, the plate was washed 3 times with PBS containing 0.05% Tween20 and blocked 1 h at room temperature (RT) with PBS containing 1% BSA. Wells were then incubated with rabbit- α -A β 43 (1:500), 21F12 (1:10000), 2G3 (1:3000), or biotinylated pan-A β antibody (clone 4G8, Biolegend, San Diego, CA, USA; cat. no. 800701, 1:2500), diluted in PBS containing 1% BSA. After 2 h incubation at RT and subsequent washing, wells were incubated for 1 h with a secondary antibody (goat- α -rabbit HRP, rabbit- α -mouse HRP, or streptavidin-HRP) at RT. As a substrate, 100 μ l of 3,3',5,5'-tetramethylbenzidine (TMB) solution was added, and the reaction was stopped with 50 μ l of 1 M H₂SO₄. Optical density (OD) values were measured at 450 nm using a Tecan Infinity F50 plate reader.

Quantification of A β load

Whole sections were scanned at a 20x objective magnification using a V120 virtual slide microscope (Olympus, Tokyo, Japan). Thirty regions of interest (ROIs) were selected in a zigzag sequence along the cortical ribbon, to ensure representation of cortical layers, in similar anatomical regions for each case. ROIs were analysed using Fiji software (version 1.51) to obtain a protein load defined as percentage of immunostained area, as in previous studies [30, 37]. The immunostained area predominantly represents the amount of A β accumulated in the brain parenchyma as plaques, and is therefore referred to as such, although CAA might have made a small contribution to this value.

Quantification of CAA

Quantification of CAA was performed on the entire section at a 10x objective magnification. The grade of A β staining was scored in each leptomeningeal vessel as follows: fully affected by CAA (full circumference and thickness), partially affected by CAA, or not affected by CAA, and the data were expressed as percentage stained

vessels (%). In the cortex, blood vessels fully affected by CAA (full circumference and thickness) or partially affected by CAA were counted, and the data were presented as the number of affected vessels per cortical grey matter area (cm²), as previously performed in our group [5]. For analyses, fully and partially stained vessels were combined into one group (e.g. 'positive vessels'), as no differences between fully and partially stained vessels were detected.

Statistical analysis

Data analysis was performed using IBM SPSS Statistics 25 (Armonk, NY, USA) and GraphPad Prism 5 (La Jolla, CA, USA). Normality of data was assessed using D'Agostino & Pearson test. The protein loads of the three A β isoforms were compared using a Kruskal-Wallis test and post-hoc Mann-Whitney U-test with Bonferroni correction for multiple analysis. The numbers of vessels in AD patients affected by A β 43, A β 42, and A β 40 were analysed using paired t-tests. Correlations between A β isoform length and A β load in plaques and CAA was assessed using Spearman's test. The protein loads and total numbers of positive vessels for each A β isoform were compared between AD and iAD cases using two-sample two-sided t-test or nonparametric Mann-Whitney U-test (depending on the normality of the data). The correlations between total numbers of leptomeningeal and parenchymal vessels affected by the three A β isoforms were assessed in the combined cohort of AD and iAD patients using Spearman's test. The threshold for statistical significance was set at 5%.

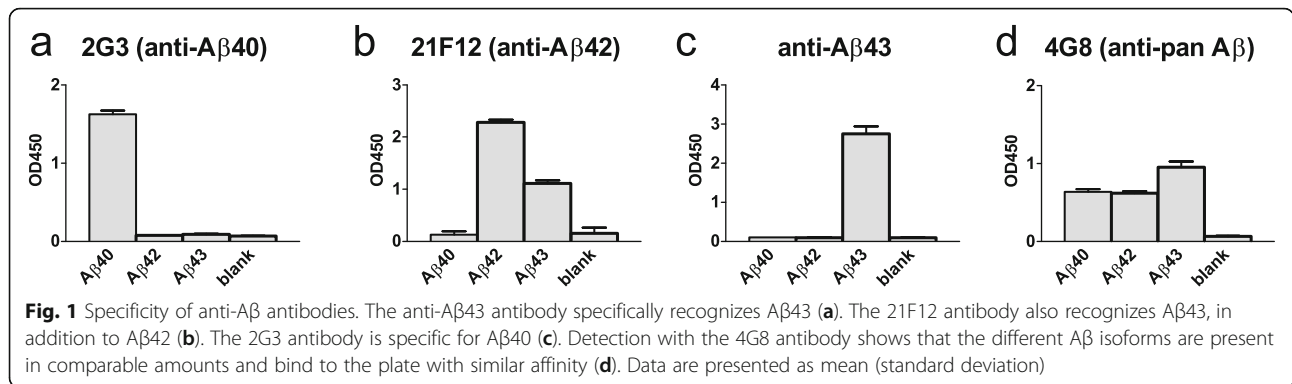
Results

Antibody specificity

The immunoassays showed that the anti-A β 43 antibody specifically recognized A β 43 (Fig. 1a). Interestingly, the 21F12 antibody detected both the A β 42 peptide, and, to a much lesser extent, the A β 43 peptide (Fig. 1b). The 2G3 antibody was specific for A β 40 (Fig. 1c). Detection using the pan-A β 4G8 antibody was used to confirm that all three A β peptides were coated in similar amounts (Fig. 1d).

A β peptides in plaques in AD cases

Qualitative assessment of reactivity of the different A β antibodies in the middle temporal lobe showed that anti-A β 43 and anti-A β 42 antibodies immunolabeled diffuse and dense-core plaques, whereas A β 40 detection was largely confined to plaque cores (Fig. 2a-f). Comparison of the area immunostained by each A β antibody showed that A β 43 immunostaining (median 6.0%) covered a larger area of the cortex compared to A β 40 (median 2.3%, $p = 0.006$). The area covered by A β 42 immunostaining (median 3.9%) was also significantly higher than the area covered by A β 40 ($p =$



0.036), but did not differ from the Aβ43 immunostained area ($p = 0.17$; Fig. 2g).

Aβ peptides in CAA in AD cases

Aβ43 was, like Aβ42 and Aβ40, detected in leptomeningeal and parenchymal blood vessels as illustrated in Fig. 3. Quantification of vascular staining revealed lower numbers of parenchymal vessels affected per cm² by Aβ43 (median 1.5) compared to Aβ42 (median 5.3, $p = 0.03$) and Aβ40 (median 6.2, $p = 0.045$, Fig. 4a). Similarly, the percentage of Aβ43-affected leptomeningeal vessels (median 5.6) was significantly lower compared to Aβ42 (median 17.3, $p = 0.007$) and Aβ40 (median 27.4, $p = 0.003$). The percentage of leptomeningeal vessels in which Aβ42 was detected was significantly lower than the percentage of Aβ40-affected vessels ($p = 0.012$) (Fig. 4b-e).

Peptide length correlates to Aβ load

A correlation was observed between Aβ peptide length and Aβ load in plaques (Aβ43 > Aβ42 > Aβ40, $r_s = 0.48$, $p =$

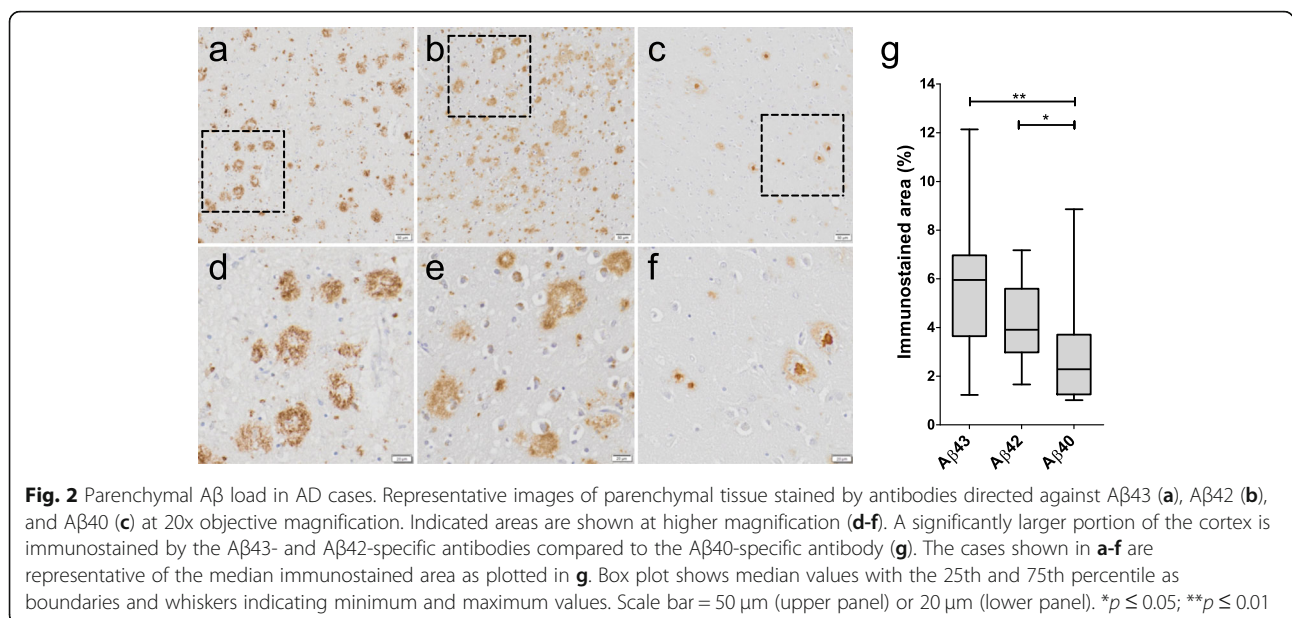
0.0002, Fig. 5a). Interestingly, an inverse correlation was observed between Aβ peptide length and the numbers of both parenchymal (Aβ40 > Aβ42 > Aβ43, $r_s = -0.39$, $p = 0.003$, Fig. 5b) and leptomeningeal ($r_s = -0.42$, $p = 0.001$, Fig. 5c) vessels positive for the different Aβ isoforms.

Effect of immunotherapy on Aβ peptides in plaques

Quantification of Aβ in the iAD cases showed a reduction in median immunostained area values by a factor of 5.5 for Aβ43 (AD = 6.0; iAD = 1.1; $p < 0.0001$), a factor of 2.3 for Aβ42 (AD = 3.9; iAD = 1.7; $p = 0.0006$), and factor of 2.5 for Aβ40 (AD = 2.3; iAD = 0.9; $p = 0.004$), compared to the unimmunized AD cases (Fig. 6a-i).

Effect of immunotherapy on Aβ peptides in CAA

There was substantial variation in the numbers of Aβ-positive vessels between iAD cases. No significant differences for the numbers of parenchymal vessels affected by Aβ43, Aβ42, and Aβ40 were detected between non-immunized and immunized AD cases



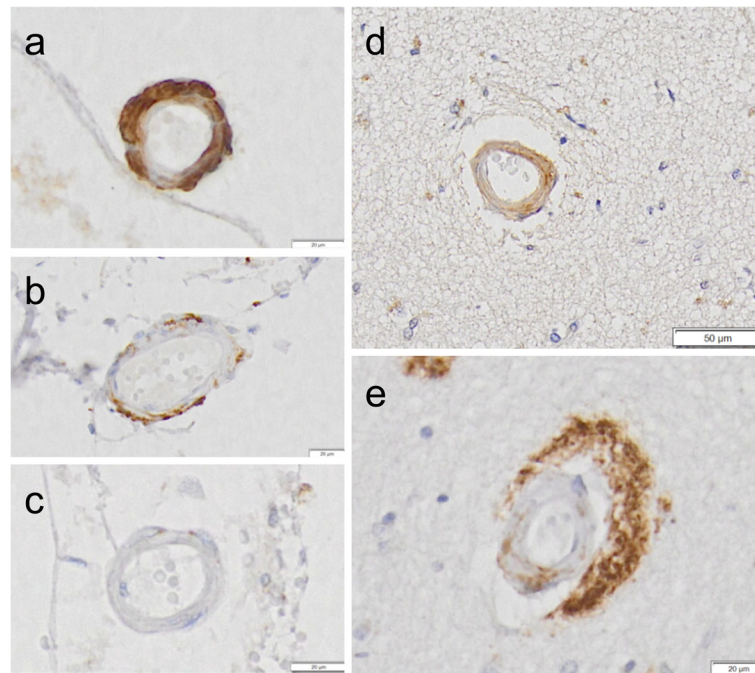


Fig. 3 Representative examples of A β 43 staining in cerebral small vessels. A β 43-immunostaining was detected in both leptomeningeal (**a, b**) and parenchymal (**d, e**) vessels. Some immunostained vessels were partially stained (**b, e**). In others, A β 43 staining was detected in the full circumference and thickness of the vessel wall (**a, d**). Many vessels were devoid of A β 43 (**c**). Scale bar = 20 μ m (**a, b, c, e**) or 50 μ m (**d**)

(Fig. 7a). Similarly, no differences were observed for the percentages of stained leptomeningeal vessels. Median values of positive leptomeningeal vessels were 45.4% in iAD versus 27.4% in AD for A β 40, and 45.0% in iAD versus 16.4% in AD for A β 42, whereas they were almost identical for A β 43 (3.4% versus 2.9%). Analysis of the complete cohort (combining AD and iAD cases) showed that the numbers of leptomeningeal or parenchymal vessels affected by either A β 43, A β 42, or A β 40 were strongly correlated to each other, with r_s values between 0.57 and 0.85, and $p < 0.001$ for all correlations (Fig. 8). These correlations were also observed in separate correlation analysis of the unimmunized AD cohort (r_s values between 0.63 and 0.88, and p values between < 0.001 and 0.015). Similarly, 14 out of 15 peptide correlations were significant in the immunized AD cohort (r_s values between 0.55 and 0.85, and p values between < 0.001 and 0.04), the relation between leptomeningeal A β 43 and parenchymal A β 42 being the only exception ($r_s = 0.44$, $p = 0.11$).

Discussion

In this study, we have explored the relatively little studied A β 43 peptide and compared its cerebral expression levels in AD cases to those of A β 42 and A β 40, and studied the effects of active A β 42 immunotherapy. Aggregation propensity [15] and neurotoxic properties [8] of A β 43 have

been defined as indicators for an important pathogenic role of A β 43 in AD. Knock-in mice containing a presenilin-1 R278I mutation overproduced A β 43, and crossing these mice with APP transgenic mice resulted in offspring with elevated A β 43 levels, impaired short-term memory, and accelerated amyloid pathology [29]. Our results in AD cases also indicated that large amounts of A β 43 accumulated into plaques, to a degree that is similar to that of A β 42 accumulation. The cerebrovascular expression of A β 43 has received sparse attention in literature. It has been demonstrated in brain tissue of five AD patients that A β 43 and A β 42 are absent from CAA [13]. Using mass spectrometry, it was demonstrated that A β 43 levels in SDS preparations of brain tissue, containing blood vessels or parenchymal deposits other than plaque cores, are substantially lower compared to A β 40 and A β 42 [36]. Together, these data suggested that A β 43 does not readily accumulate in the vasculature. In our study, however, we observed cerebrovascular accumulation of A β 43 in AD, although less vessels were positive for A β 43 compared to A β 42 and A β 40. Of note, despite low levels of cerebrovascular A β 43, we observed a high abundance of A β 43 in plaques. Interestingly, we found a correlation between A β peptide length and plaque load (A β 43 > A β 42 > A β 40), indicating that longer A β peptides have an increased tendency towards accumulation in the brain parenchyma. In contrast, an inverse correlation was observed between A β peptide length and CAA load (A β 40 > A β 42 > A β 43), suggesting that shorter peptides

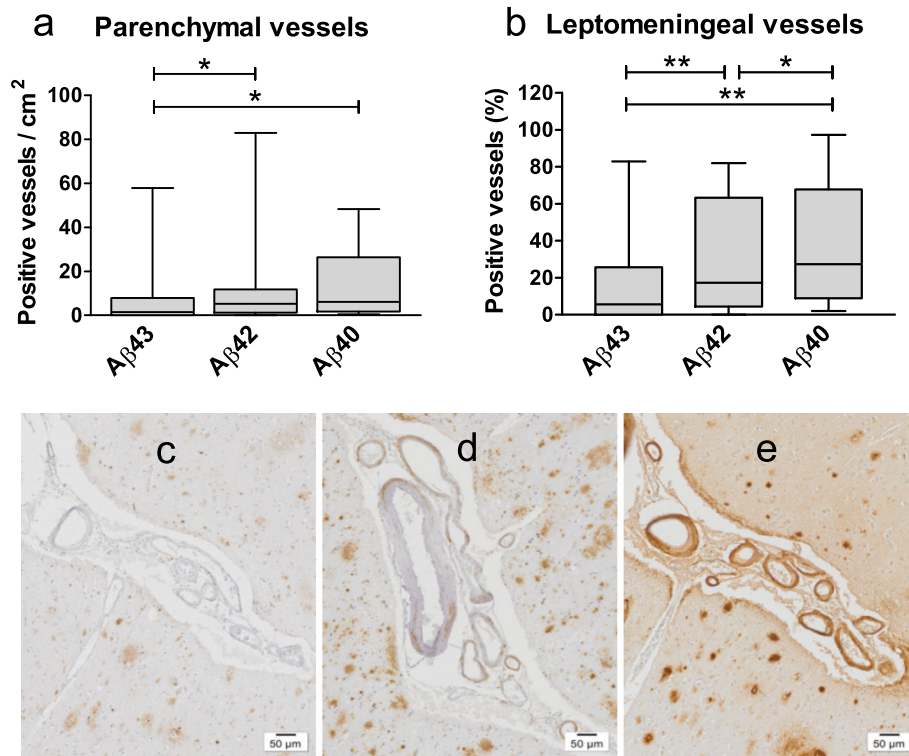


Fig. 4 Aβ peptides in the cerebrovasculature of AD cases. Analysis of the numbers of parenchymal (a) and leptomeningeal (b) vessels affected by Aβ43, Aβ42, and Aβ40 in AD cases shows significantly lower numbers of vessels affected by Aβ43 compared to the other peptides. Images of cerebrovascular immunostaining of Aβ43 (c), Aβ42 (d), and Aβ40 (e) in the same cortical area of an AD case. Box plots show median values with the 25th and 75th percentile as boundaries and whiskers indicating minimum and maximum values. Scale bar = 50 μm. **p* ≤ 0.05; ***p* ≤ 0.01

have an increased tendency to accumulate in the cerebrovasculature.

We found a higher plaque load of Aβ43 and Aβ42 versus Aβ40 (Fig. 2g), which likely drives the positive association between plaque load and peptide length (Fig. 5a). It is known that Aβ42 and Aβ40 differ in that Aβ40 is mainly located in plaque cores whereas

Aβ42 is present also in the diffuse component of plaques [14], and the immunohistochemical pattern of Aβ43 in our study largely resembles that of Aβ42 (Fig. 2). It is possible, though, that a non-significant number of plaques contain more Aβ43 than the other isoforms, or that the distribution of Aβ43 extends beyond the area stained for Aβ42 in some plaques. This

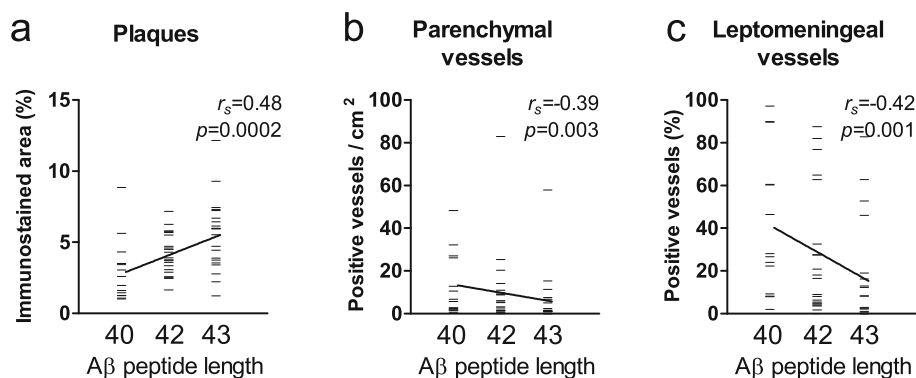


Fig. 5 Plaque and CAA severity correlate to Aβ peptide length. Analysis of plaque and CAA severity in brain tissue of AD patients immunostained for Aβ43, Aβ42, and Aβ40 shows that Aβ peptide length correlates to plaque load (a). An inverse correlation between Aβ peptide length and both the number of Aβ-affected parenchymal vessels (b) and leptomeningeal vessels (c) is observed

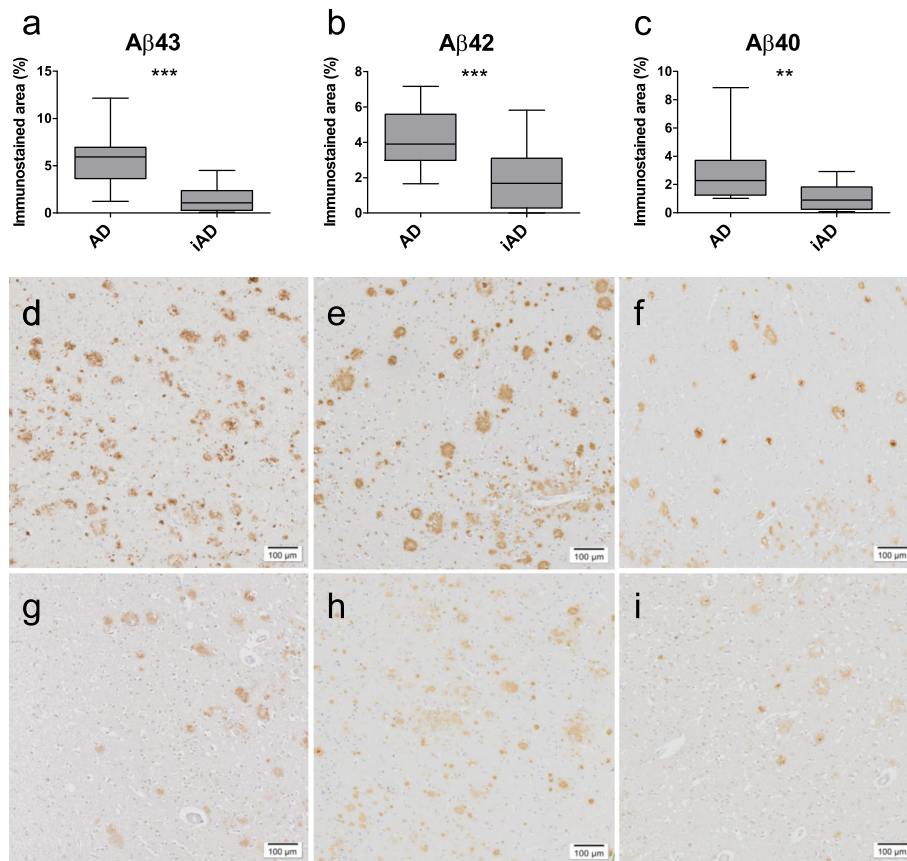


Fig. 6 Effect of immunotherapy on parenchymal Aβ load. Aβ43 (a), Aβ42 (b), and Aβ40 (c) loads are significantly lower in iAD cases compared to non-immunized AD cases. Representative images of Aβ43 (d, g), Aβ42 (e, h), and Aβ40 (f, i) load in AD (d-f) and immunized AD cases (g-i). Box plots show median values with the 25th and 75th percentile as boundaries and whiskers indicating minimum and maximum values. Scale bar = 100 μm. ** $p \leq 0.01$; *** $p \leq 0.001$

point has not been addressed in this study and requires meticulous analysis of expression patterns in individual plaques, which was outside the scope of this study. Similarly, it is likely that Aβ40, Aβ42, and Aβ43 are – a least to some extent – colocalised in blood vessel walls. Future studies including double or triple Aβ staining in brain tissue of AD and iAD patients are needed to provide insight into the exact co-localisation of various Aβ isoforms in plaques and CAA.

One hypothesis to explain the relatively low abundance of Aβ43 in the cerebrovasculature compared to other isoforms in AD, is a more efficient Aβ43 clearance at the BBB. Analysing the fate of Aβ43 following immunotherapy may provide insight in this potential efficient clearance of Aβ43. Similar to Aβ40 and Aβ42, the Aβ43 load in the parenchyma is decreased in response to Aβ42 immunotherapy. This is not surprising, as the majority of antibodies produced following AN1792 immunization are directed against the N-terminus of Aβ, which is shared by all three Aβ isoforms

[19]. Interestingly, despite the absence of a gross significant difference in cerebrovascular expression of the three peptides in the two cohorts, Aβ43 was the only isoform that did not display the gross - yet not significant - increase of leptomeningeal CAA that was seen for Aβ42 (275%) and Aβ40 (165%) after immunization. This is noteworthy, considering the fact that Aβ43 is the isoform that was most rigorously removed from plaques (5.5 times lower Aβ43 load compared to a 2.3- and 2.5-fold reduction for Aβ42 and Aβ40 respectively), indicating that following immunotherapy Aβ43 is readily released from plaques. However, despite its increased availability for transport towards the vasculature, Aβ43 is less prone to accumulate at the vasculature than Aβ42. This suggests that Aβ43 might be more efficiently cleared at the BBB. A potential alternative explanation for the relatively low abundance of Aβ43 in the AD vasculature could be its high propensity to aggregate [15, 29], which may prevent Aβ43 from reaching the vasculature. There are, however, several arguments against that scenario. First, if its high

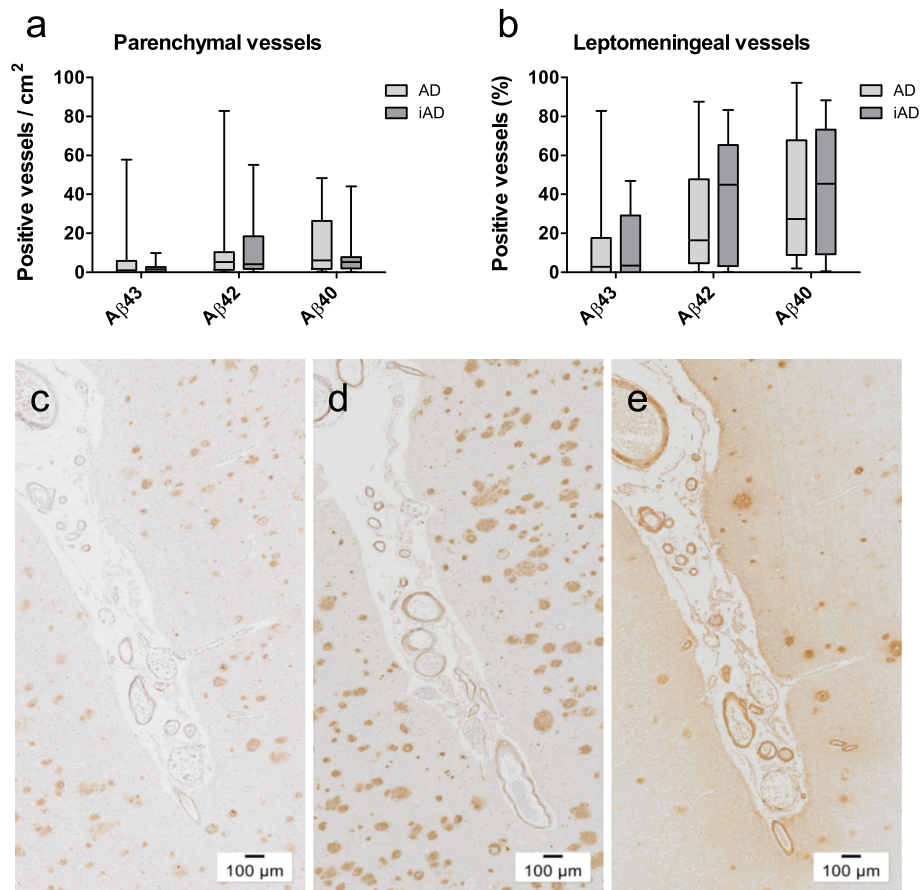


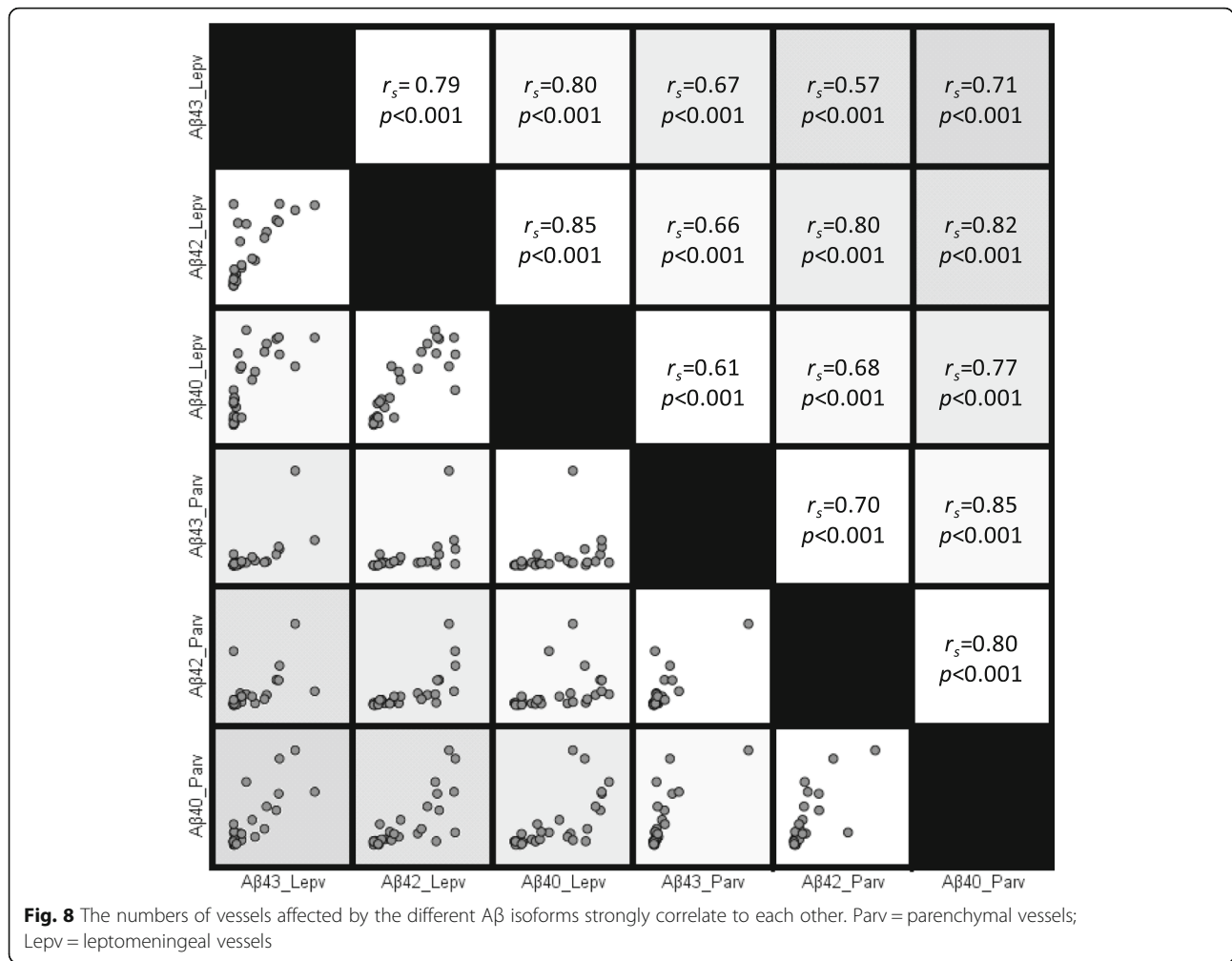
Fig. 7 Effect of immunotherapy on cerebrovascular Aβ load. The numbers of parenchymal (a) and leptomeningeal (b) vessels affected by Aβ43, Aβ42, or Aβ40 did not differ between AD and iAD cases. Images of cerebrovascular immunostaining of Aβ43 (c), Aβ42 (d), and Aβ40 (e) in the same cortical area of an immunized AD case. Box plots show median values with the 25th and 75th percentile as boundaries and whiskers indicating minimum and maximum values. Scale bar = 100 μm

aggregation propensity would explain the low abundance of Aβ43 in CAA, it would be expected that after solubilization of Aβ43 from plaques, its levels in CAA would increase. This is, however, not the case. Second, a high aggregation propensity does not necessarily prevent vascular accumulation of Aβ, as can be deduced from observations on the Dutch mutant Aβ40(E22Q) which is both very prone to aggregate and widely observed in the cerebrovasculature in mutation carriers [11, 18]. Therefore, the low abundance of Aβ43 in CAA seems to be more consistent with our hypothesis of a more efficient clearance of this Aβ isoform across the BBB.

We used immunohistochemistry to assess the antigen load of the different Aβ isoforms. Although this is a widely accepted method for relative protein quantification [6, 29, 30], a possible limitation of our study is that comparison of antigen load stained by different antibodies is not fully possible. However, by carefully selecting thresholds for every antibody, we ensured that only

specific immunoreactivity for each antibody was captured, allowing for relative assessment of the expression of the different Aβ isoforms. However, immunohistochemistry does not yield a measure of absolute protein levels, and the observed differences between Aβ isoforms are relative.

Using immunoassays, we showed that the 21F12 antibody, often used for its assumed Aβ42-specificity, also recognized Aβ43, albeit more weakly. This observation has been shared and acknowledged by many researchers through the use of the term “Aβ42(43)-specific” when describing the 21F12 antibody. Many antibodies thought to be specific for Aβ42 also recognize longer variants, a fact that should be kept in mind when interpreting results obtained using such antibodies. We do not expect that this cross-reactivity has substantially affected our results, as the vascular and parenchymal changes of Aβ42 accumulation due to immunotherapy have been described before and our findings are in line with these previous studies [5, 23].



Earlier studies in our cohort have shown a decrease in the number of plaques and an increase of vascular Aβ42 and Aβ40 in the early years after immunotherapy [5, 30]. We confirmed significantly lower levels of Aβ42 and Aβ40 in plaques of iAD patients compared to unimmunized patients. However, we did not detect significantly higher numbers of Aβ42- and Aβ40-affected vessels in the immunized group. A possible explanation might be that in the current study only one brain region, the middle temporal gyrus, was included in the analysis, whereas in earlier publications multiple brain regions were studied, including the frontal, middle and temporal gyrus, and thus we might be less powered to detect these changes. Another, more important, explanation may be that, in the current study, we have expanded the iAD population with patients who survived longer after immunization than in previous studies. It is possible that the effects of active immunization on cerebrovascular Aβ levels may be transient or less pronounced in the long term. Indeed, we found indications of a negative correlation between Aβ42 levels in CAA and survival

time (parenchymal Aβ42: $r = -0.605$, $p = 0.022$; leptomeningeal Aβ42: $r = -0.629$, $p = 0.021$), although the small number of cases precludes any firm conclusion.

Another potential confounder may be that, in line with previous observations, the extent of Aβ release from plaques is positively associated with the level of the immune response [12]. In addition, we observed a trend towards lower levels of Aβ in CAA in cases with a strong immune response (data not shown), indicating that, in addition to plaque removal, immunotherapy may lead to the removal of vascular Aβ, as has been demonstrated before in mouse models [3, 25]. However, again, the small number of cases and the limitation of only one studied brain region precludes us from drawing firm conclusions on these potential relations. Further studies on the long-term effects of active immunization on CAA levels are needed.

Conclusions

We show that Aβ43 is not only an important constituent of plaques but also associated with CAA, albeit at lower

levels than A β 42 and A β 40, suggesting that the expression pattern of A β pathology is isoform-specific. Furthermore, neuropathological analysis from the first human immunotherapy study also yielded preliminary evidence that A β 43 may be more efficiently cleared at the BBB than A β 42 and A β 40, although mechanistic studies are needed to confirm this suggestion.

Abbreviations

AD: Alzheimer's disease; APP: Amyloid precursor protein; A β : Amyloid- β ; BBB: Blood-brain barrier; CAA: Cerebral amyloid angiopathy; DAB: 3,3'-diaminobenzidine; OD: Optical density; ROI: Region of interest; RT: Room temperature; SWDBB: South West Dementia Brain Bank; TMB: 3,3',5,5'-tetramethylbenzidine

Acknowledgments

We would like to thank the South West Brain Dementia Brain Bank (SWDBB) which is supported by BRACE (Bristol Research into Alzheimer's and Care of the Elderly), Brains for Dementia Research and the Medical Research Council. We thank the participating patients and their relatives. We acknowledge The Neuropathology Section, Department of Cellular Pathology, University Hospital Southampton NHS Foundation Trust, the Histochemistry Research Unit and the Biomedical Imaging Unit of the Faculty of Medicine, University of Southampton that facilitated tissue processing, staining and analysis.

Authors' contributions

MMV, DB and JARN conceived and designed the study. LJ performed experiments, quantification, and data analysis. LJ, JARN, DB, and MMV interpreted the data. LJ drafted the manuscript and MMV, DB and JARN revised the manuscript. All authors read and approved the manuscript.

Funding

This research was supported by research grants (projects 14502 and 12506 to MMV) and a travel grant from Alzheimer Nederland to LJ. MMV is supported by the BIONIC project (nr. 733050822), which has been made possible by ZonMW, part of the Dutch national 'Deltaplan for Dementia': zonmw.nl/dementiaresearch. The collection of the AD and iAD cases was supported by the Alzheimer's Research UK (ART/PG2006/4, ART-EXT2010-1, ARUK-EG2015A-4) and the Medical Research Council (G0501033).

Availability of data and materials

The datasets used and/or analysed during the current study available from the corresponding author on reasonable request.

Ethics approval and consent to participate

The study of the iAD cohort was performed under the ethical approval from Southampton and South West Hampshire Local Research Ethics Committees (Reference No: LRC 075/03/w). The use of the SWDBB tissue was covered by the ethical approval from North Somerset and South Bristol Hampshire Local Research Ethics Committees (Reference No: REC 08/H0106/28 + 5).

Consent for publication

Not applicable.

Competing interests

The authors declare that they have no competing interests.

Author details

¹Department of Neurology, Donders Institute for Brain, Cognition and Behaviour, Radboud Alzheimer Center, Radboud University Medical Center, Nijmegen, The Netherlands. ²Department of Laboratory Medicine, Radboud University Medical Center, Nijmegen, The Netherlands. ³Clinical Neurosciences, Clinical and Experimental Sciences, University of Southampton, Southampton, UK. ⁴Department of Cellular Pathology, University Hospital Southampton NHS Foundation Trust, Southampton, UK.

Received: 24 May 2019 Accepted: 15 August 2019

Published online: 02 September 2019

References

- Attems J (2005) Sporadic cerebral amyloid angiopathy: pathology, clinical implications, and possible pathomechanisms. *Acta Neuropathol* 110(4):345–359
- Attems J, Jellinger KA, Lintner F (2005) Alzheimer's disease pathology influences severity and topographical distribution of cerebral amyloid angiopathy. *Acta Neuropathol* 110(3):222–231
- Bales KR et al (2016) Passive immunotherapy targeting amyloid-beta reduces cerebral amyloid angiopathy and improves vascular reactivity. *Brain* 139(Pt 2):563–577
- Bayer AJ et al (2005) Evaluation of the safety and immunogenicity of synthetic Abeta42 (AN1792) in patients with AD. *Neurology* 64(1):94–101
- Boche D et al (2008) Consequence of Abeta immunization on the vasculature of human Alzheimer's disease brain. *Brain* 131(Pt 12):3299–3310
- Boche D et al (2010) Neuropathology after active Abeta42 immunotherapy: implications for Alzheimer's disease pathogenesis. *Acta Neuropathol* 120(3):369–384
- Bolduc DM et al (2016) The amyloid-beta forming tripeptide cleavage mechanism of γ -secretase. *eLife* 5:e17578
- Burnouf S et al (2015) Abeta43 is neurotoxic and primes aggregation of Abeta40 in vivo. *Acta Neuropathol* 130(1):35–47
- Gravina SA et al (1995) Amyloid beta protein (a beta) in Alzheimer's disease brain. Biochemical and immunocytochemical analysis with antibodies specific for forms ending at a beta 40 or a beta 42(43). *J Biol Chem* 270(13):7013–7016
- Hawkes CA et al (2014) Failure of perivascular drainage of beta-amyloid in cerebral amyloid angiopathy. *Brain Pathol* 24(4):396–403
- Herzig MC et al (2004) Abeta is targeted to the vasculature in a mouse model of hereditary cerebral hemorrhage with amyloidosis. *Nat Neurosci* 7(9):954–960
- Holmes C et al (2008) Long-term effects of Abeta42 immunisation in Alzheimer's disease: follow-up of a randomised, placebo-controlled phase I trial. *Lancet* 372(9634):216–223
- Iizuka T et al (1995) Amyloid beta-protein ending at Thr43 is a minor component of some diffuse plaques in the Alzheimer's disease brain, but is not found in cerebrovascular amyloid. *Brain Res* 702(1–2):275–278
- Iwatsubo T et al (1994) Visualization of a beta 42(43) and a beta 40 in senile plaques with end-specific beta monoclonals: evidence that an initially deposited species is a beta 42(43). *Neuron* 13(1):45–53
- Jarrett JT, Berger EP, Lansbury PT Jr (1993) The carboxy terminus of the beta amyloid protein is critical for the seeding of amyloid formation: implications for the pathogenesis of Alzheimer's disease. *Biochemistry* 32(18):4693–4697
- Johnson-Wood K et al (1997) Amyloid precursor protein processing and a beta42 deposition in a transgenic mouse model of Alzheimer disease. *Proc Natl Acad Sci U S A* 94(4):1550–1555
- Karran E, Mercken M, De Strooper B (2011) The amyloid cascade hypothesis for Alzheimer's disease: an appraisal for the development of therapeutics. *Nat Rev Drug Discov* 10(9):698–712
- Kumar-Singh S et al (2002) In vitro studies of Flemish, Dutch, and wild-type β -amyloid provide evidence for two-staged neurotoxicity. *Neurobiol Dis* 11(2):330–340
- Lee M et al (2005) Abeta42 immunization in Alzheimer's disease generates Abeta N-terminal antibodies. *Ann Neurol* 58(3):430–435
- Nicoll J, et al., Persistent neuropathological effects 14 years following amyloid- β immunisation in Alzheimer's disease. 2019
- Nicoll JA et al (2003) Neuropathology of human Alzheimer disease after immunization with amyloid-beta peptide: a case report. *Nat Med* 9(4):448–452
- Nicoll JA et al (2004) Cerebral amyloid angiopathy plays a direct role in the pathogenesis of Alzheimer's disease. Pro-CAA position statement. *Neurobiol Aging* 25(5):589–597 discussion 603–4
- Nicoll JA et al (2006) Abeta species removal after abeta42 immunization. *J Neuropathol Exp Neurol* 65(11):1040–1048
- Patton RL et al (2006) Amyloid-beta peptide remnants in AN-1792-immunized Alzheimer's disease patients: a biochemical analysis. *Am J Pathol* 169(3):1048–1063

25. Prada CM et al (2007) Antibody-mediated clearance of amyloid-beta peptide from cerebral amyloid angiopathy revealed by quantitative in vivo imaging. *J Neurosci* 27(8):1973–1980
26. Qi-Takahara Y et al (2005) Longer forms of amyloid beta protein: implications for the mechanism of intramembrane cleavage by gamma-secretase. *J Neurosci* 25(2):436–445
27. Revesz T et al (2003) Cerebral amyloid angiopathies: a pathologic, biochemical, and genetic view. *J Neuropathol Exp Neurol* 62(9):885–898
28. Roher AE et al (1993) Structural alterations in the peptide backbone of beta-amyloid core protein may account for its deposition and stability in Alzheimer's disease. *J Biol Chem* 268(5):3072–3083
29. Saito T et al (2011) Potent amyloidogenicity and pathogenicity of Abeta43. *Nat Neurosci* 14(8):1023–1032
30. Sakai K et al (2014) Abeta immunotherapy for Alzheimer's disease: effects on apoE and cerebral vasculopathy. *Acta Neuropathol* 128(6):777–789
31. Schilling S et al (2018) Passive Abeta Immunotherapy: Current Achievements and Future Perspectives. *Molecules* 23(5):1068
32. Takami M et al (2009) Gamma-secretase: successive tripeptide and tetrapeptide release from the transmembrane domain of beta-carboxyl terminal fragment. *J Neurosci* 29(41):13042–13052
33. Tarasoff-Conway JM et al (2015) Clearance systems in the brain-implications for Alzheimer disease. *Nat Rev Neurol* 11(8):457–470
34. Thal DR et al (2002) Two types of sporadic cerebral amyloid angiopathy. *J Neuropathol Exp Neurol* 61(3):282–293
35. Wang Y et al (2017) Lessons from anti-amyloid-beta immunotherapies in Alzheimer disease: aiming at a moving target. *Neurodegener Dis* 17(6):242–250
36. Welander H et al (2009) Abeta43 is more frequent than Abeta40 in amyloid plaque cores from Alzheimer disease brains. *J Neurochem* 110(2):697–706
37. Zotova E et al (2013) Inflammatory components in human Alzheimer's disease and after active amyloid-beta42 immunization. *Brain* 136(Pt 9):2677–2696

Publisher's Note

Springer Nature remains neutral with regard to jurisdictional claims in published maps and institutional affiliations.

Ready to submit your research? Choose BMC and benefit from:

- fast, convenient online submission
- thorough peer review by experienced researchers in your field
- rapid publication on acceptance
- support for research data, including large and complex data types
- gold Open Access which fosters wider collaboration and increased citations
- maximum visibility for your research: over 100M website views per year

At BMC, research is always in progress.

Learn more biomedcentral.com/submissions

